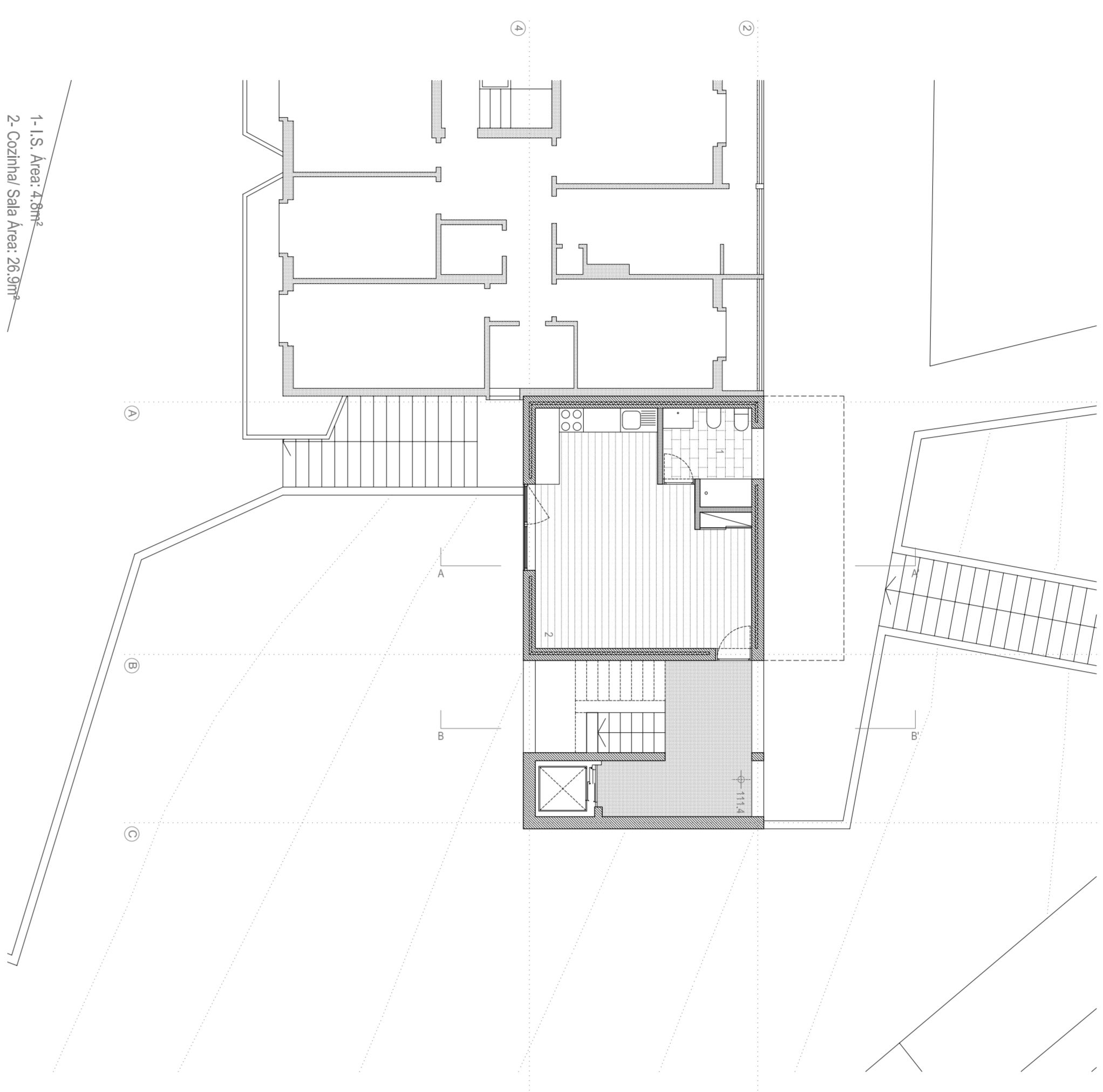
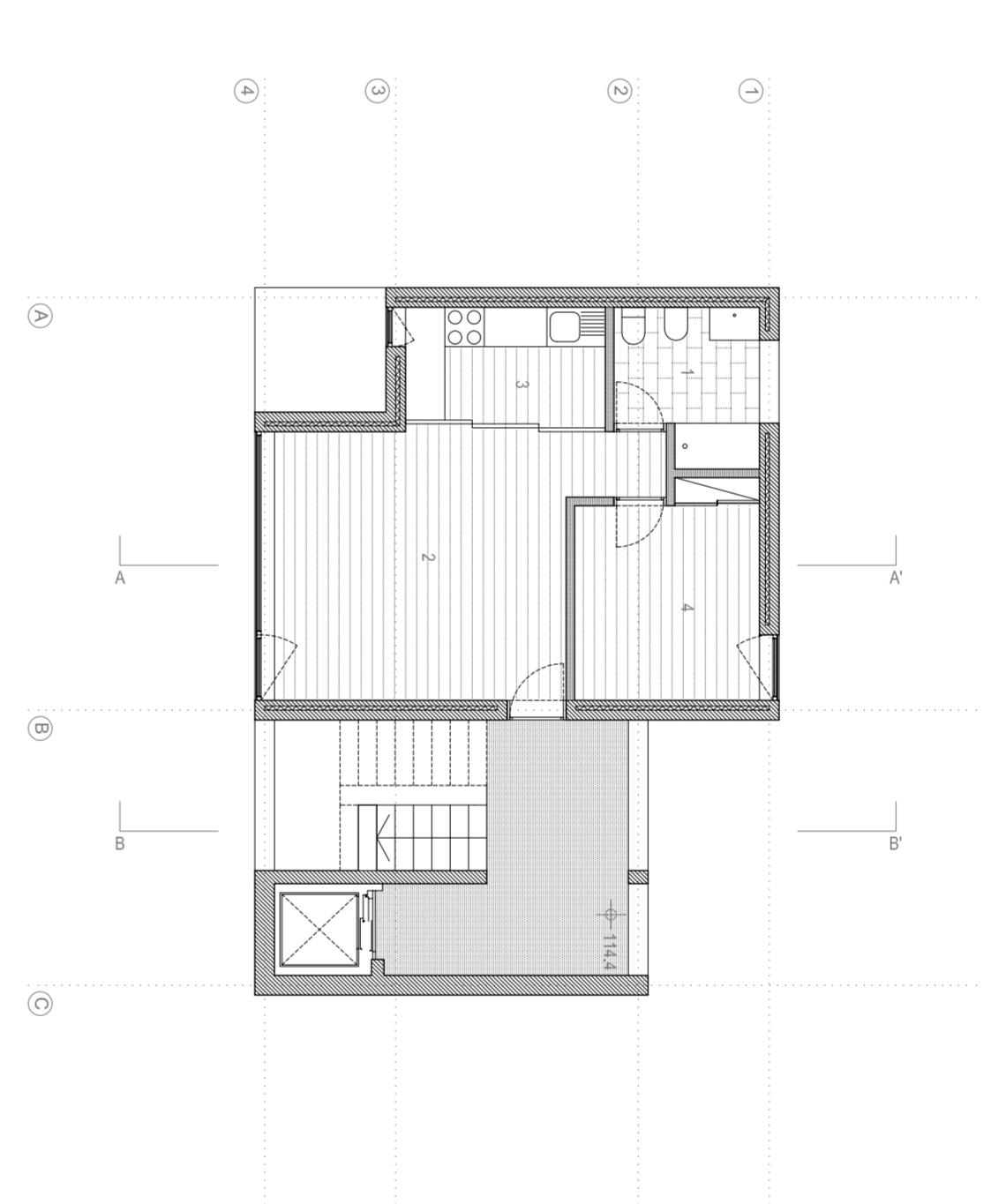


Plano Piso 0 escala 1/100



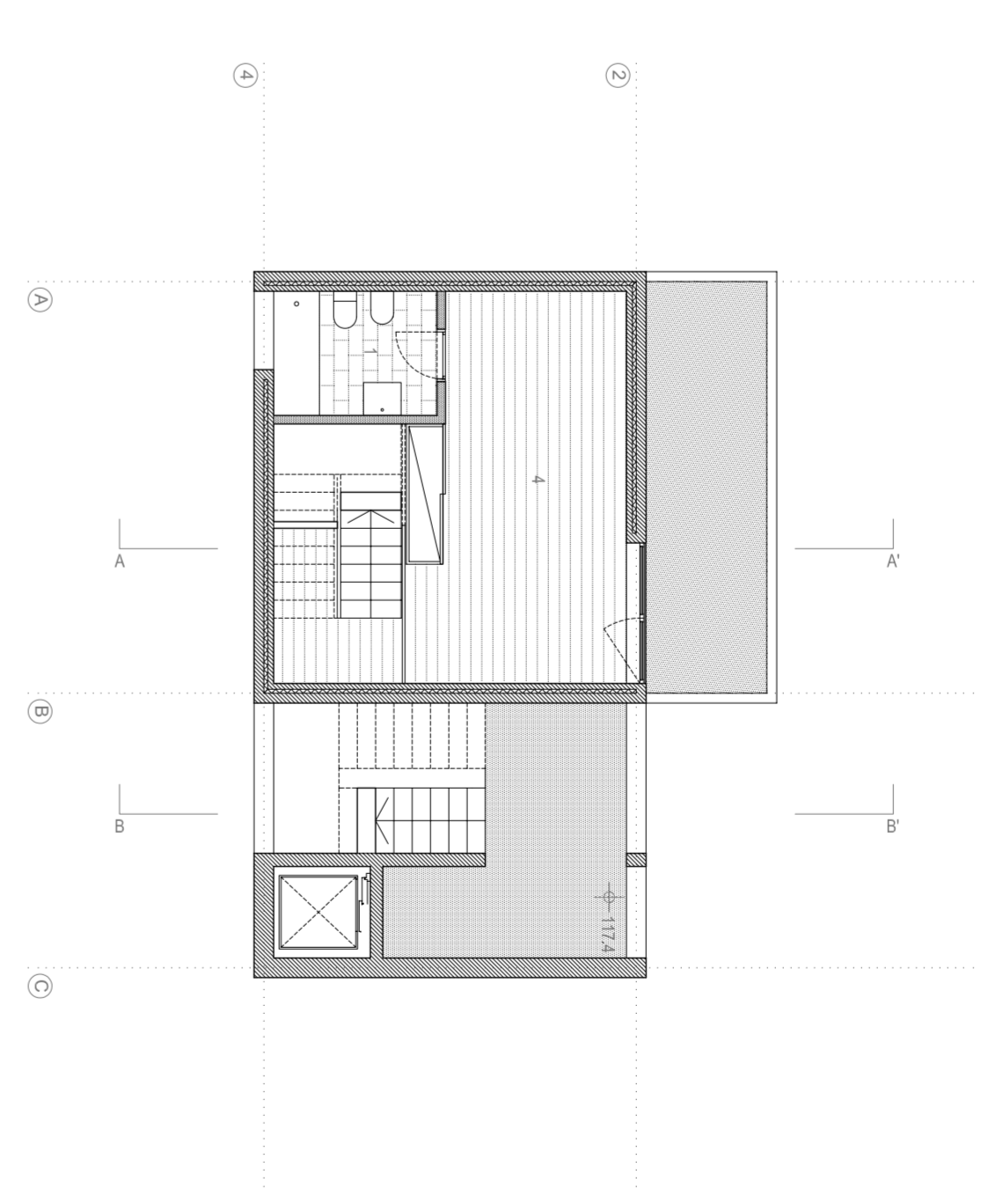
1-1.S. Área: 23m²
2- Cozinha: 8m² Área: 23,8m²

Plano Piso 1 escala 1/100



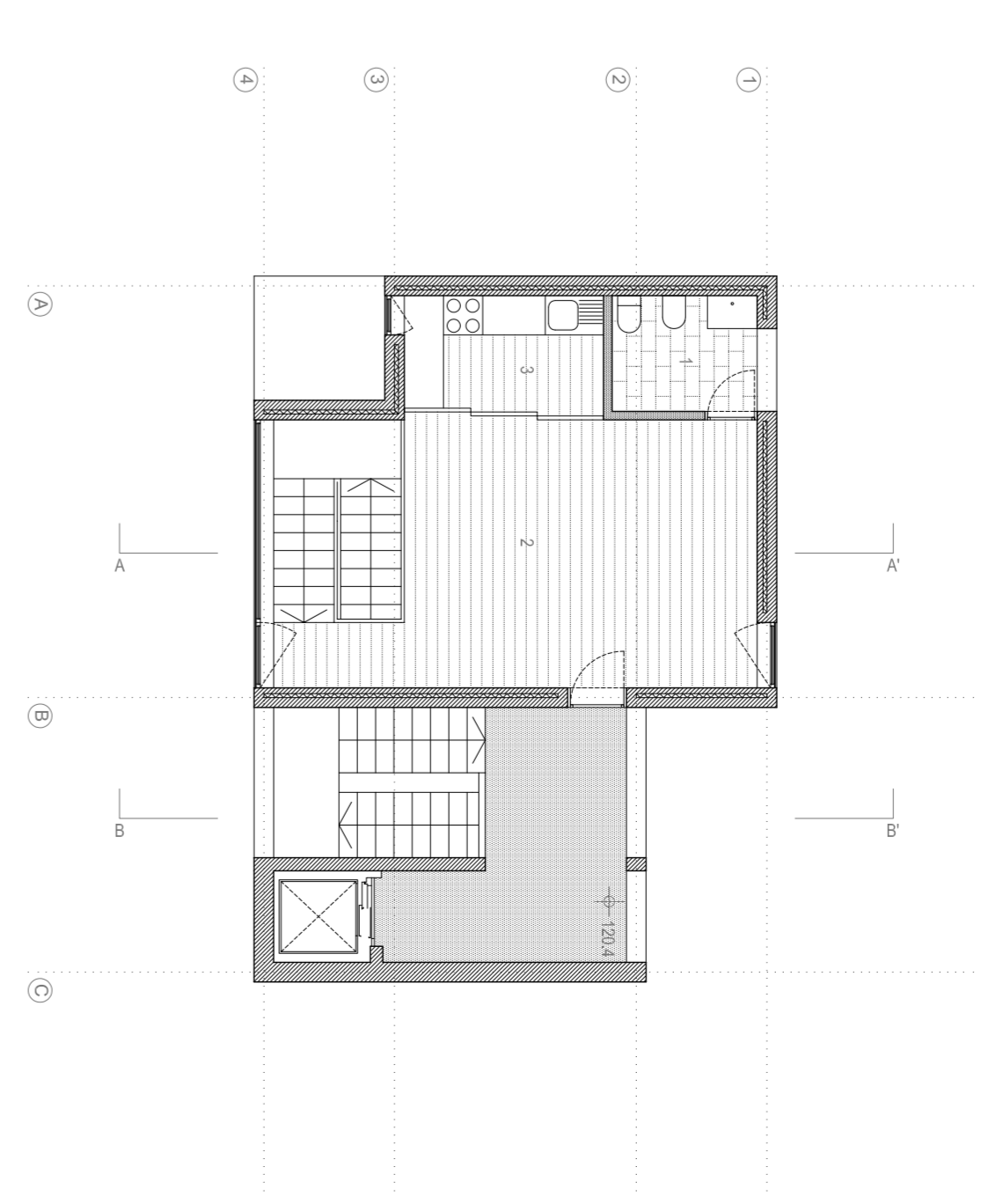
1-1.S. Área: 48m²
2- Sala: 12m²
3- Cozinha: 6m² Área: 58m²
4- Quarto: 8m² Área: 8,8m²

Plano Piso 2 escala 1/100



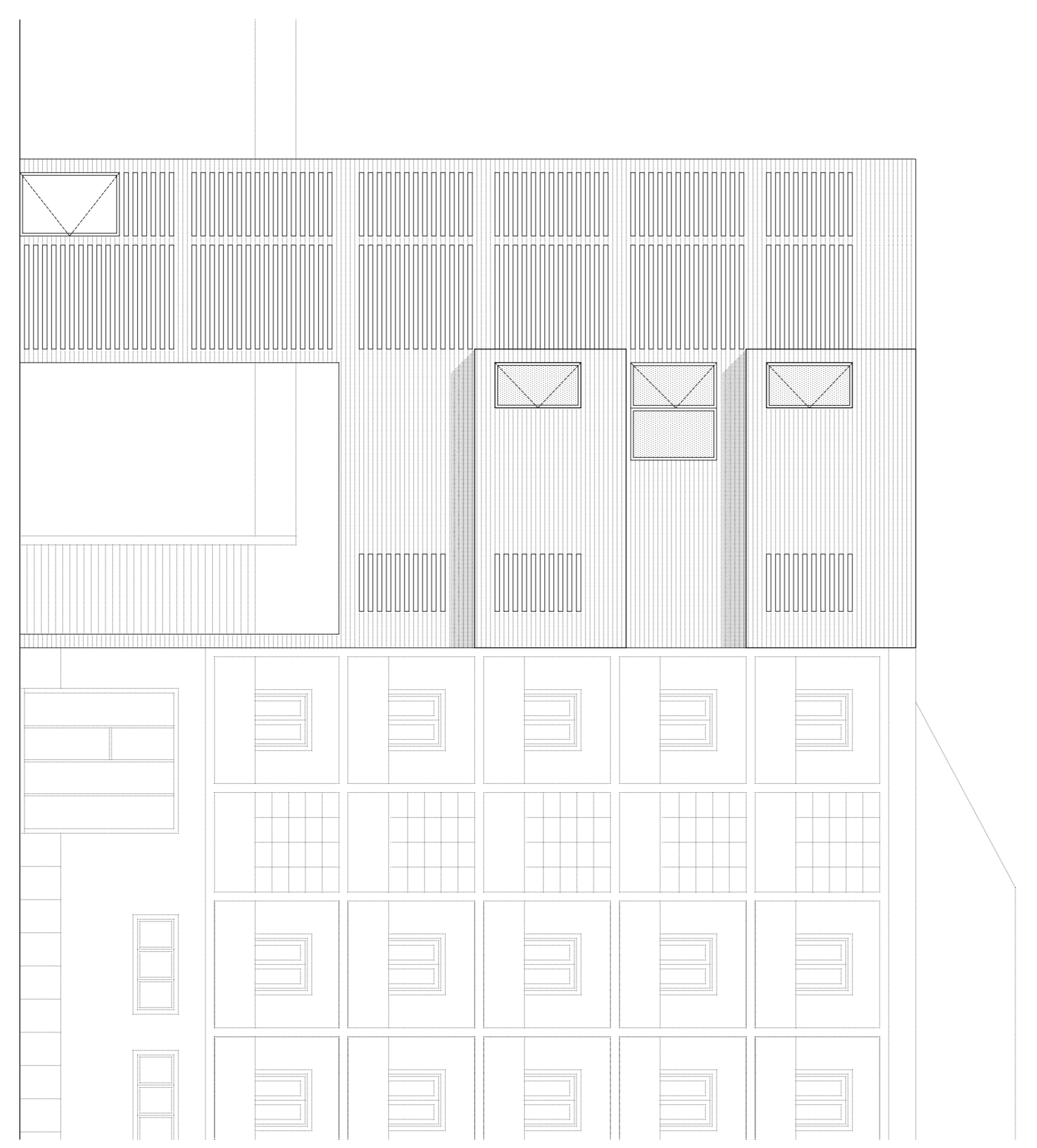
1-1.S. Área: 48m²
2- Sala: 12m²
4- Quarto: 8m² Área: 19,8m²

Plano Piso 3 escala 1/100

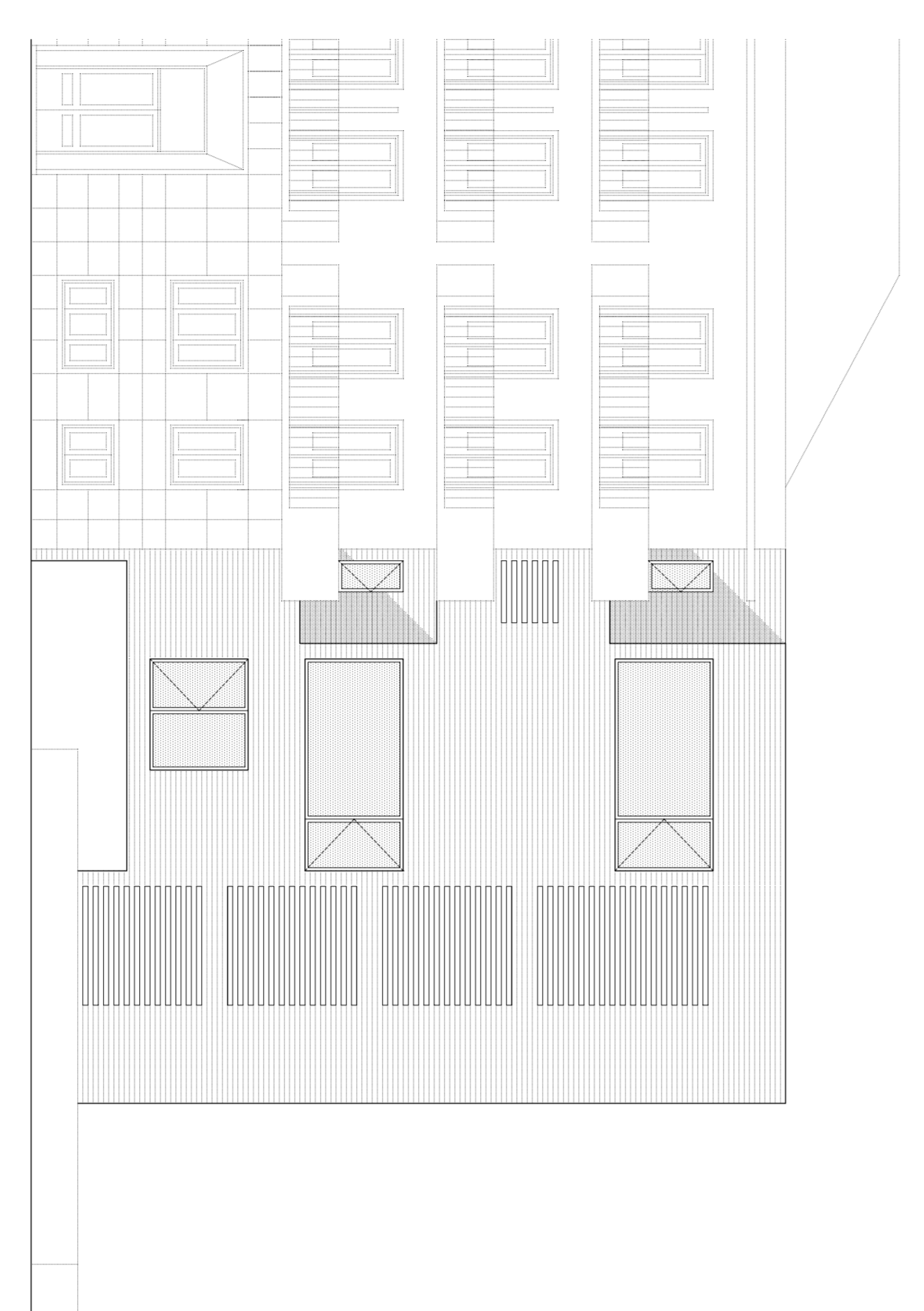


1-1.S. Área: 30m²
2- Sala: 12m² Área: 24,8m²
3- Cozinha: 6m² Área: 58m²

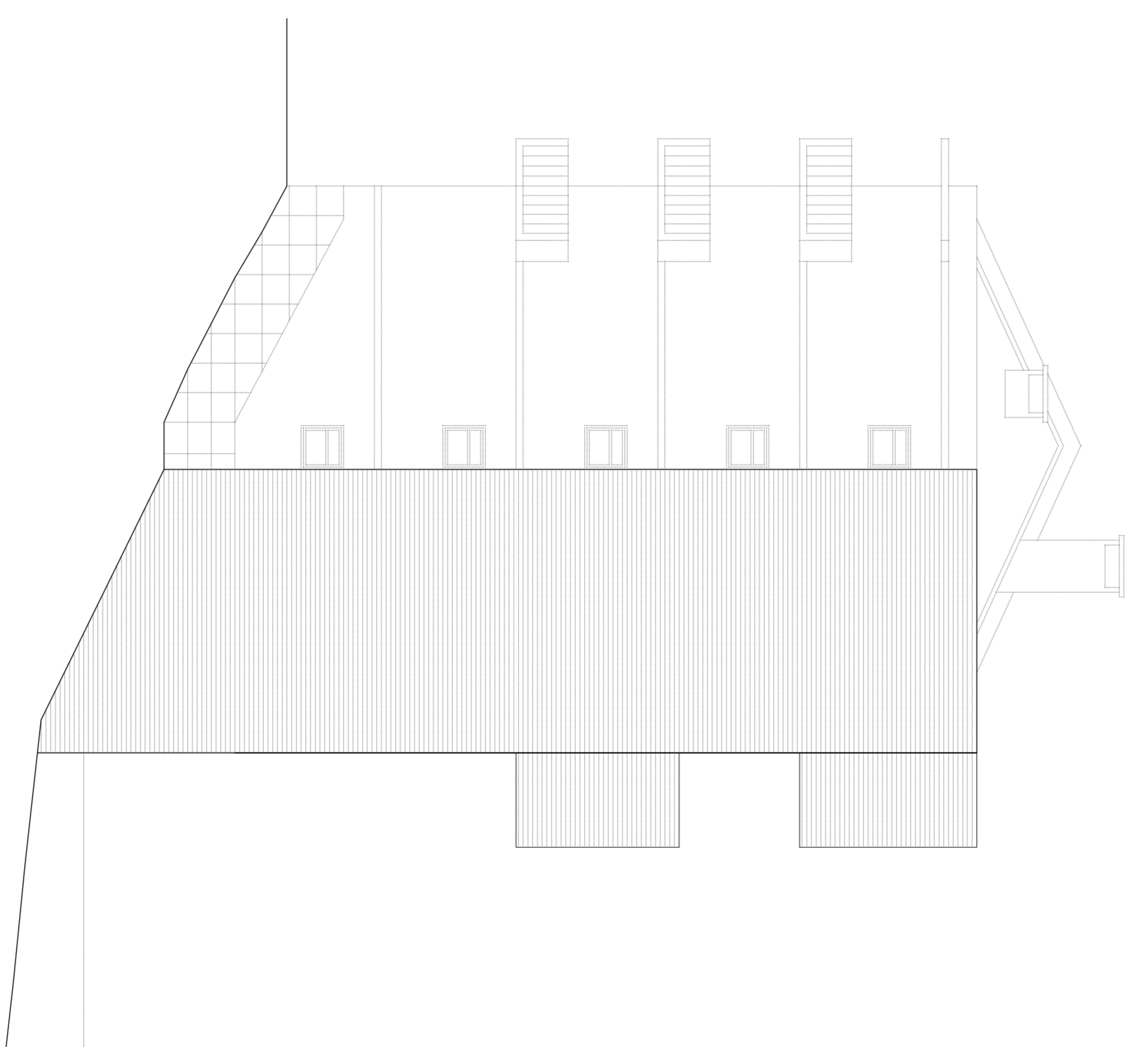
Plano Piso 4 escala 1/100



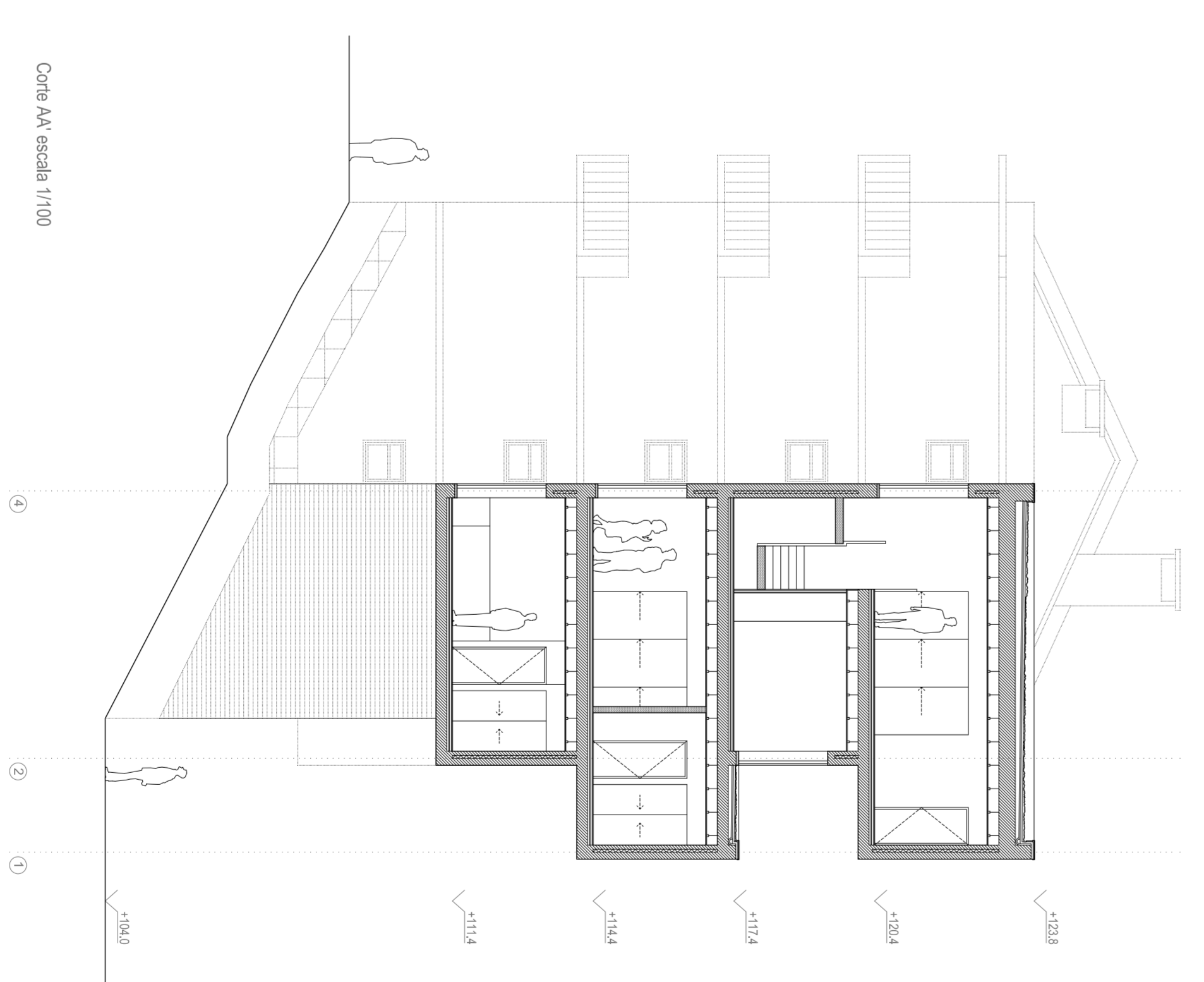
Apodo Norte escala 1/100



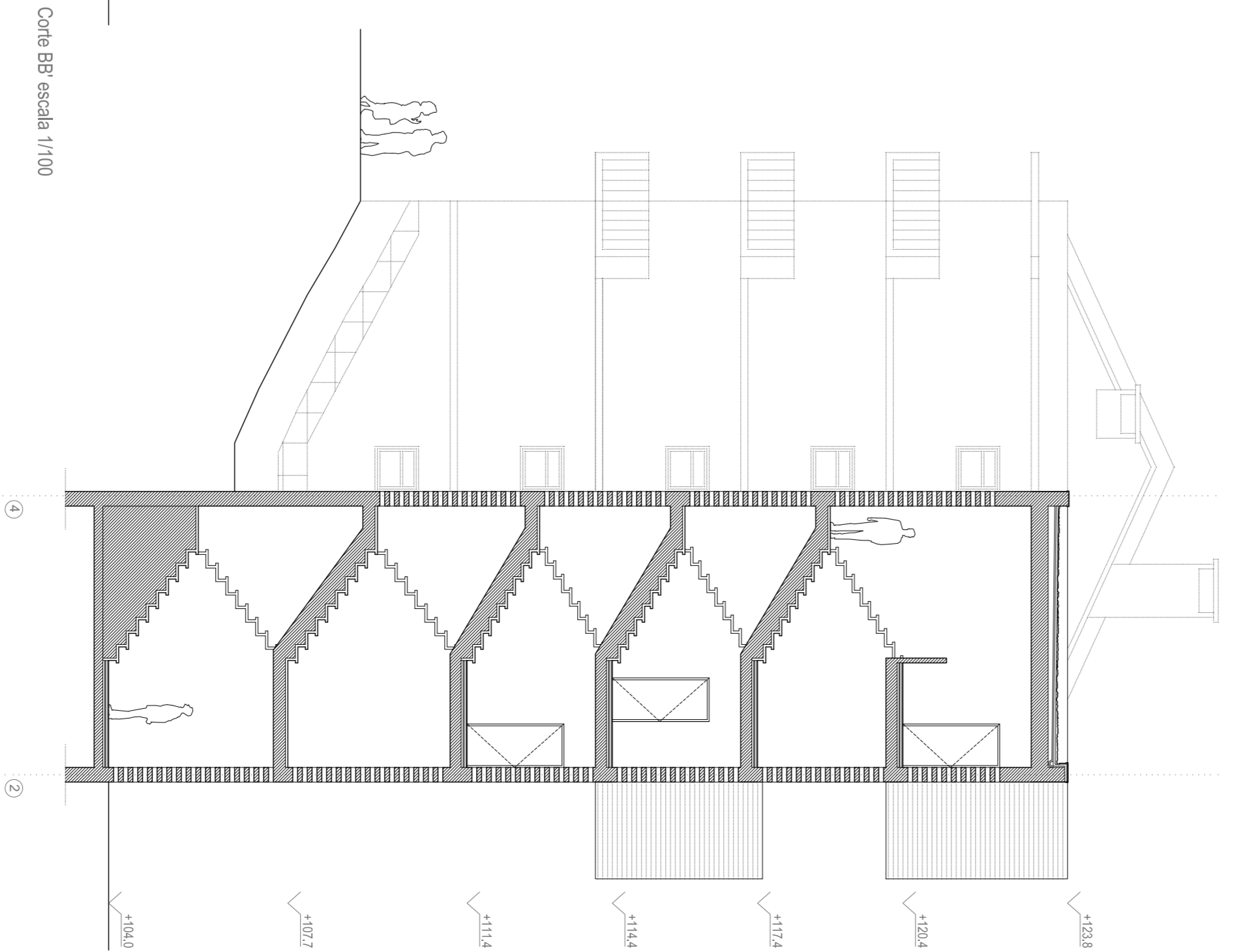
Apodo Sul escala 1/100



Apodo Este escala 1/100



Casa A escala 1/100



Casa B escala 1/100