

PTCRIS

Connected Research

PTCRIS_OrgID

Portuguese organisation identifiers authoritative system

Maria João Amante, Susana Lopes, Teresa Segurado

João Duarte, Joaquim Godinho, Luís Quintano

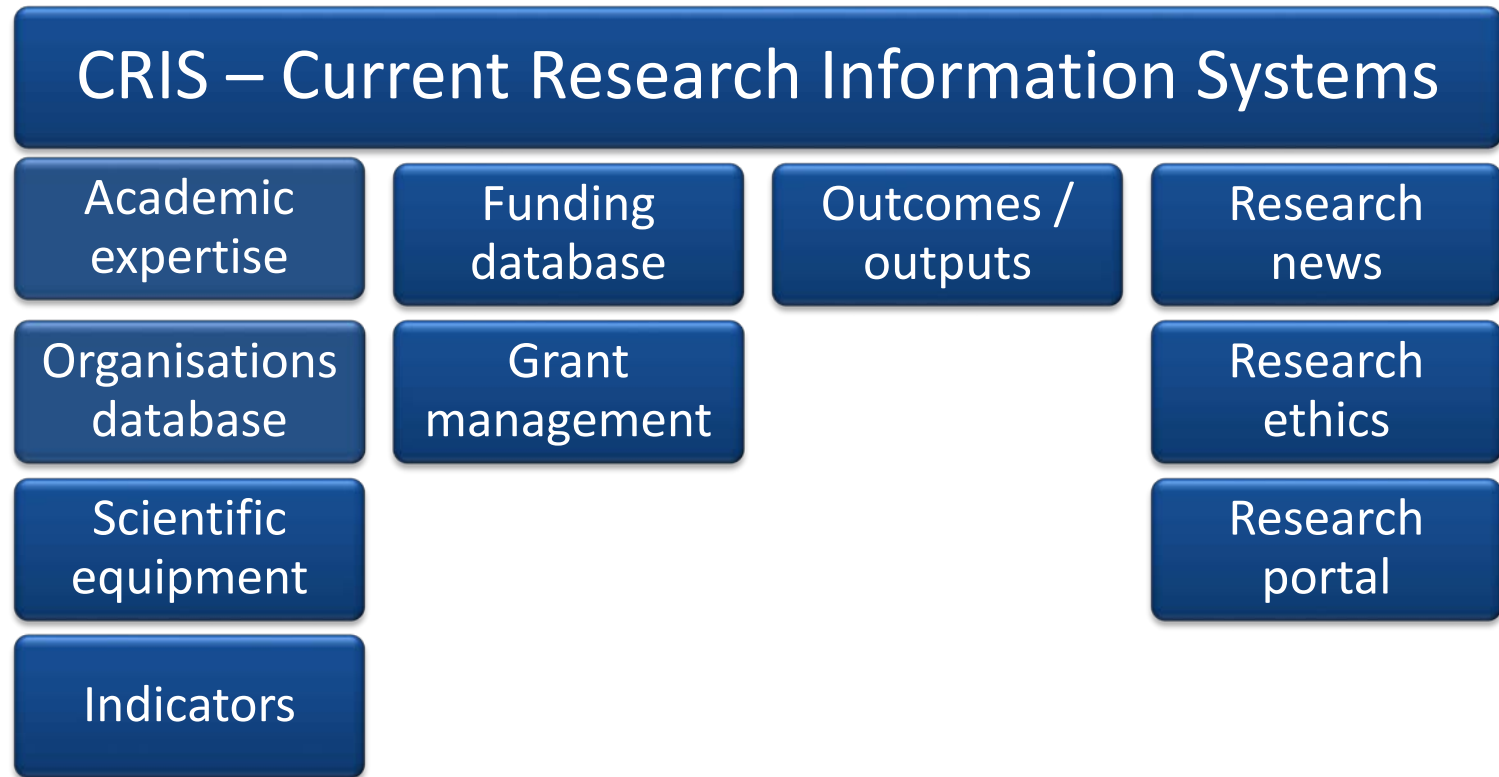
ISCTE  **IUL**

 **UNIVERSIDADE
DE ÉVORA**

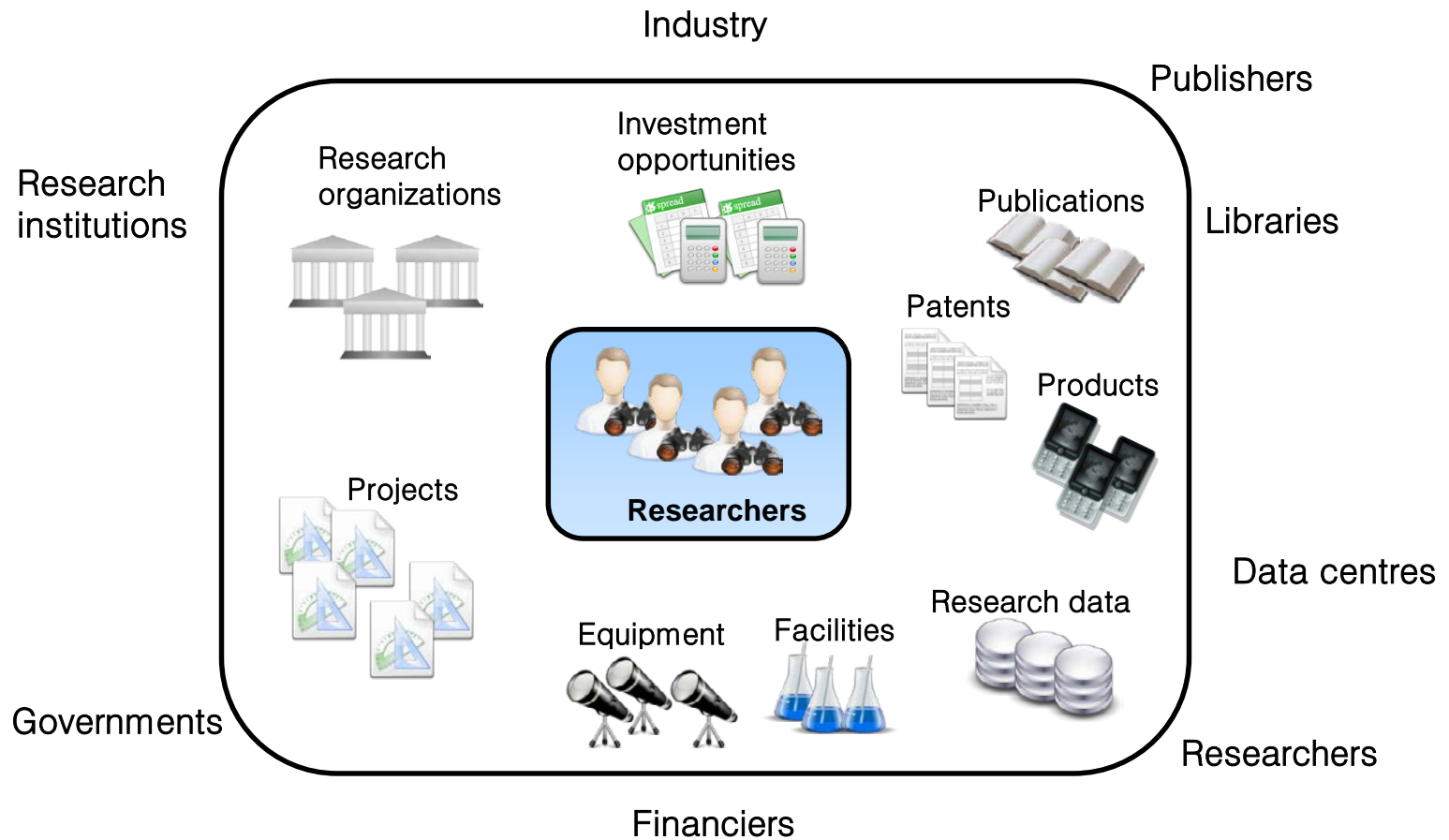
FCT Fundação para a Ciência e a Tecnologia
MINISTÉRIO DA CIÊNCIA, TECNOLOGIA E ENSINO SUPERIOR

 **GOVERNO DE
PORTUGAL** | **MINISTRO DA CIÊNCIA,
TECNOLOGIA E ENSINO SUPERIOR**

PTCRIS “ecosystem”



What we need to connect?



Synchronisation

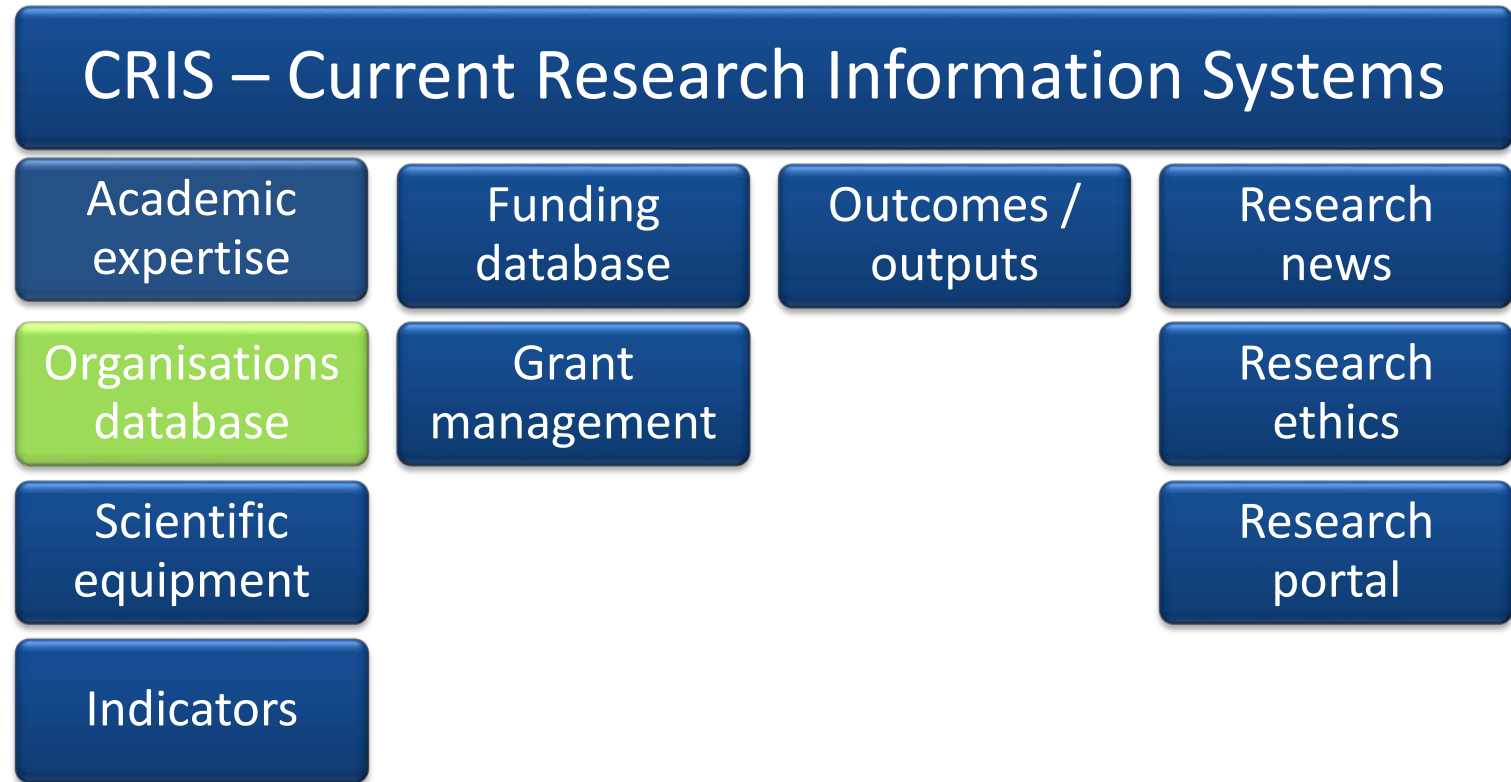
Depends on unique identifiers

- Individual identifiers
(ORCID, ResearcherId...)
- Organisation identifiers
(ISNI, Ringgold)
- Research output identifiers
(DOI, Handle, ISBN)



Data quality
Uniqueness
Linking between systems
Deduplication

PTCRIS “ecosystem”



Unique identifiers for organisations

Used to:

- Disambiguate
- Consolidate
- Establish hierarchy view

Advantages:


- Enforce uniqueness
- Eradicate duplication and improve quality of data
- Correct identification

Main tasks of this work

1. Create rules, principles and processes regarding registration of organisations in Portugal
2. Build a first version of an authoritative National Organisations Database relying on distinct sources of information:
 - Higher Education Institutions
 - Research Institutions
 - Other organisations involved with the scientific system
3. Develop an organisation reconciliation service
4. Set up a registration system for organisations (PTOrg-IS)

T3 : Reconciliation Service

Reconcile-CSV

- Service to verify the correspondence between two databases
- It works with *fuzzy matching*: works on the approximate correspondence between various segments of text
- To use the Reconcile–CSV reconciliation service it was used Open Refine 
- This service was used to reconcile National HEI Database with Ringgold (1st iteration) and ISNI (2nd iteration)



T4 : PTOrg-IS

Main Goals:

- Fill a gap in our country (no reference system in this area)
- Enable each organisation to manage their own data
- Provide access to data on the web (public) and via an API (public and restricted)
- Synchronise with international reference databases (ISNI/Ringgold)
- Assure that all the data is up to date
- Avoid multiple records for the same organisation

PTOrg-IS

Architecture



PTOrg-IS

Organisations Management



- Where all the data is processed and stays organised
- Binds together all the modules
- Where all different modules of the system interact

PTOrg-IS

User Management and Access



- Administrator
- Organisation Manager
- Organisation
- Public

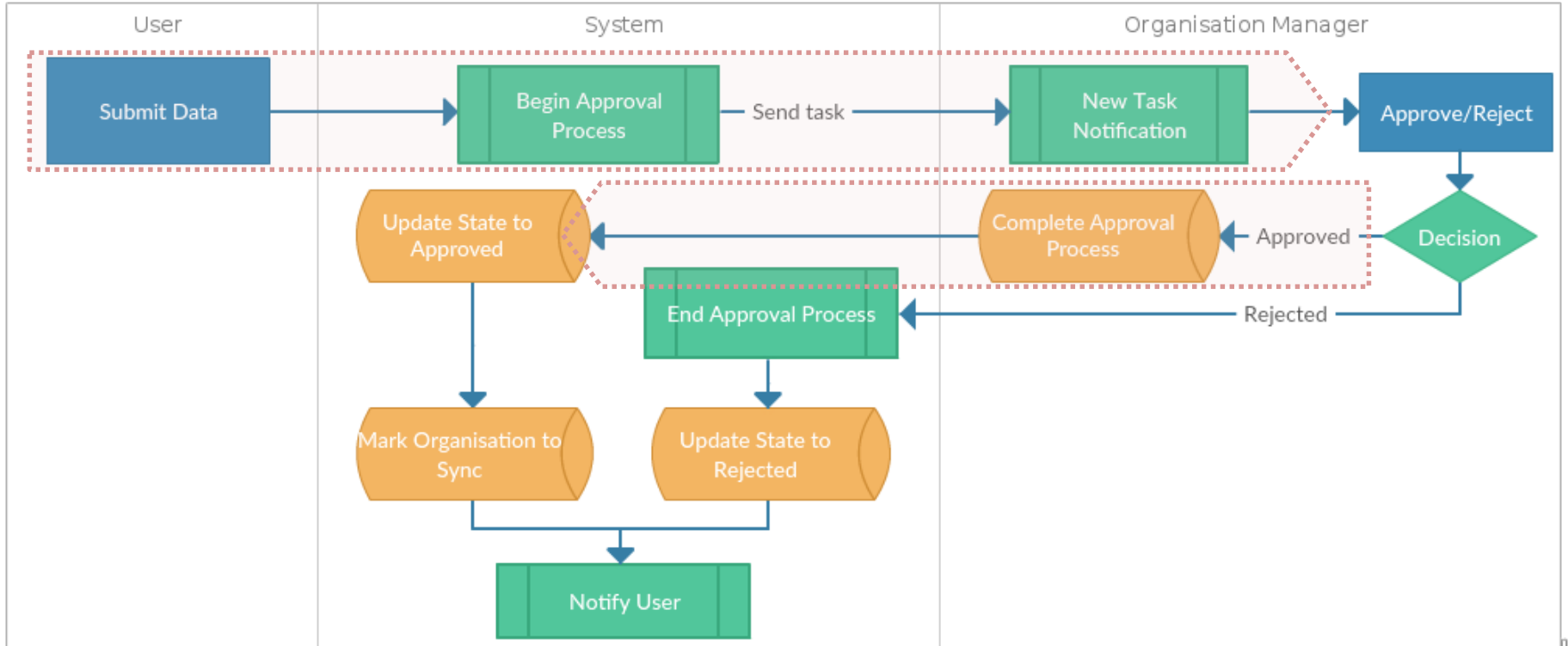
PTOrg-IS

Workflow



PTOrg-IS

Workflow



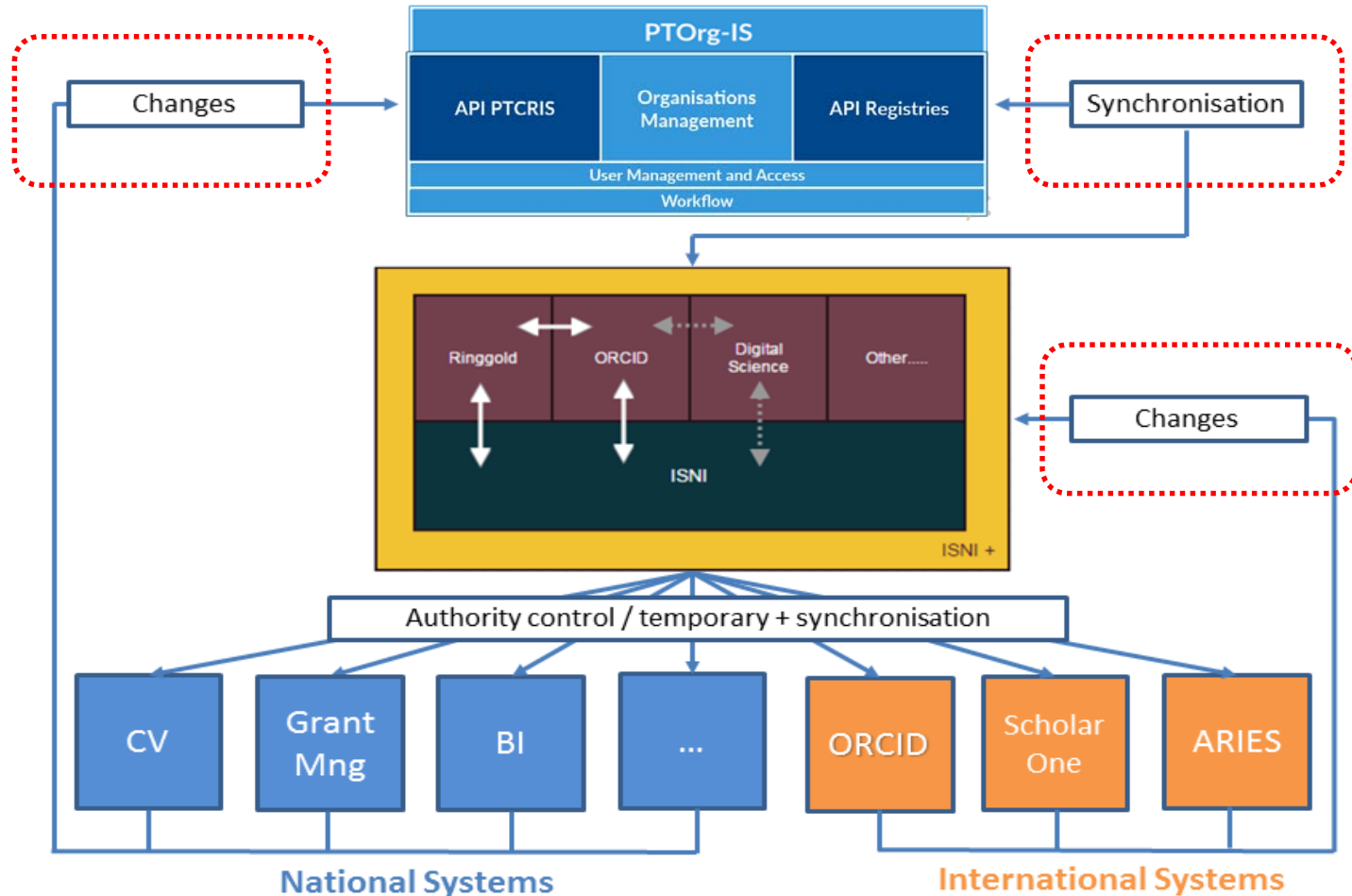
PTOrg-IS

API's



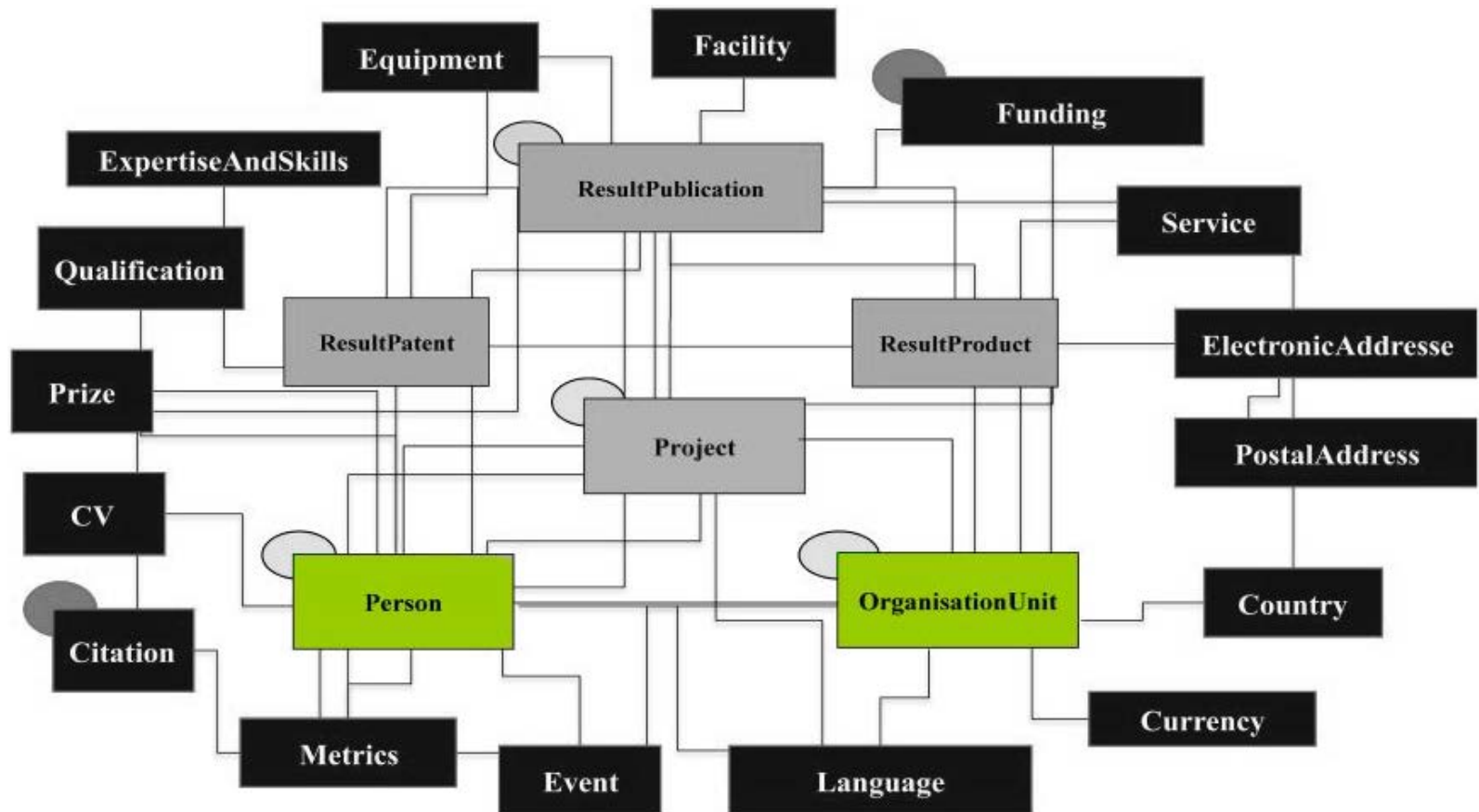
PTOrg-IS

Changes & Synchronisation



PTOrg-IS

Database (CERIF)



Thanks!

João Duarte (jtpd@uevora.pt)
Joaquim Godinho (jig@uevora.pt)
Luís Quintano (ljq@uevora.pt)



Maria João Amante (maria.amante@iscte.pt)
Susana Lopes (susana.lopes@iscte.pt)
Teresa Segurado (teresa.segurado@iscte.pt)

